



LONGRICH GLOBAL

PRODUCT CATALOG



BETTER LIFE BETTER FUTURE



COMPANY PROFILE

Founded in 1986 and headquartered in the heart of Suzhou City, Jiangsu Province, at the Longliqi High-tech Industrial Park. This is an area that covers nearly 2 million square meters. It is currently the largest R&D, production and marketing base for daily chemical products and health care products in China with the most advanced technology. Longrich has more than 1,000 varieties of products which exist in eight series, including cosmetics, health products, detergents, medical and health equipment, furniture, real estate and finance. The company has more than 10,000 employees, among which more than 35% are college students, graduate students, doctoral students and experts.

Since the establishment of the company, it has been developing healthily and steadily and has now become the leading brand in the daily chemical industry in China. As a leading enterprise in China's daily chemical industry, Longrich has established eight research and development institutes worldwide to develop, produce and sell reliable, safe and easy-to-use technology products and high-quality professional services, helping customers and partners around the world to achieve success.

In order to accelerate the process of internationalization strategy, realize the industrial transformation and the overall production technology to reach the world's leading position, Longrich spent 600 million yuan to build a world-class "new intelligent factory". The first Chinese pilot project of German Industry 4.0 has now been completed.

In recent years, Longrich has completely innovated and upgraded its brand products and fully promoted the marketing strategy of "return of the king, category breakthrough", opening a glorious page in the history of development and achieving rapid growth in category sales.

In the future, Longrich will continue to seize opportunities to adhere to the business strategy of revitalizing the national daily chemical industry, continuously improve the technological content of products and the other value added services. Longrich will keep striving to improve customer experiences and accelerate the its brand's improvement in terms of culture, popularity and reputation.

Longrich: Brand Cultivates Glory

Longrich has been leading the trend of health, beauty and fashion since its birth in 1986. It has also been leading the fashion trend based on advanced technology and is determination to help every customer achieve the perfect transformation of health and beauty.

The company has more than 10,000 employees, among which experts, doctoral students, graduate students and college students account for more than 35%. The company has been developing healthily and stably, and has become a leading brand in today's national daily chemical and health industry. Longrich has more than 1,000 different kinds of products, including health care products, beauty and skin care products, personal care products, and household cleaning products. Longrich cares for every part of your life wholeheartedly, making you confident, calm and energetic every day.

The brand name 'Longrich' combines the meaning of health, wealth, and longevity in both Chinese and English. Therefore, Longrich always adheres to the cultural connotation of health and beauty. It listens to the voice of consumers carefully, and tries its best to promote the perfect integration of science, technology and art in accordance with modern times and blooming beauty.

Longrich: Technology Creates Beauty

The R&D institutions of Jiangsu Longrich Bioscience Co., Ltd. are China's well-known research & technology centers and postdoctoral research stations that has a splendid scientific research team, and contributing strong scientific power to China's National High-tech R&D Program (i.e. 863 Program). Longrich R&D institutions have many international and domestic leading scientific elites and experts. Apart from the Headquarters R&D Center, Longrich has other institutions such as Longrich-Tsinghua University Research Institute, Longrich US R&D Center, Longrich Japan R&D Center, Longrich-Jiangnan University Research Institute, Longrich France R&D Center, Longrich Chinese Academician Lab, Longrich Postdoctoral Lab, Suzhou SIP Cosmetics Research Institute and Longrich Italy Cosmetics Research Center. All ten institutes have equipped Longrich with the ability to develop, produce, and market the latest products synchronously in the international market.

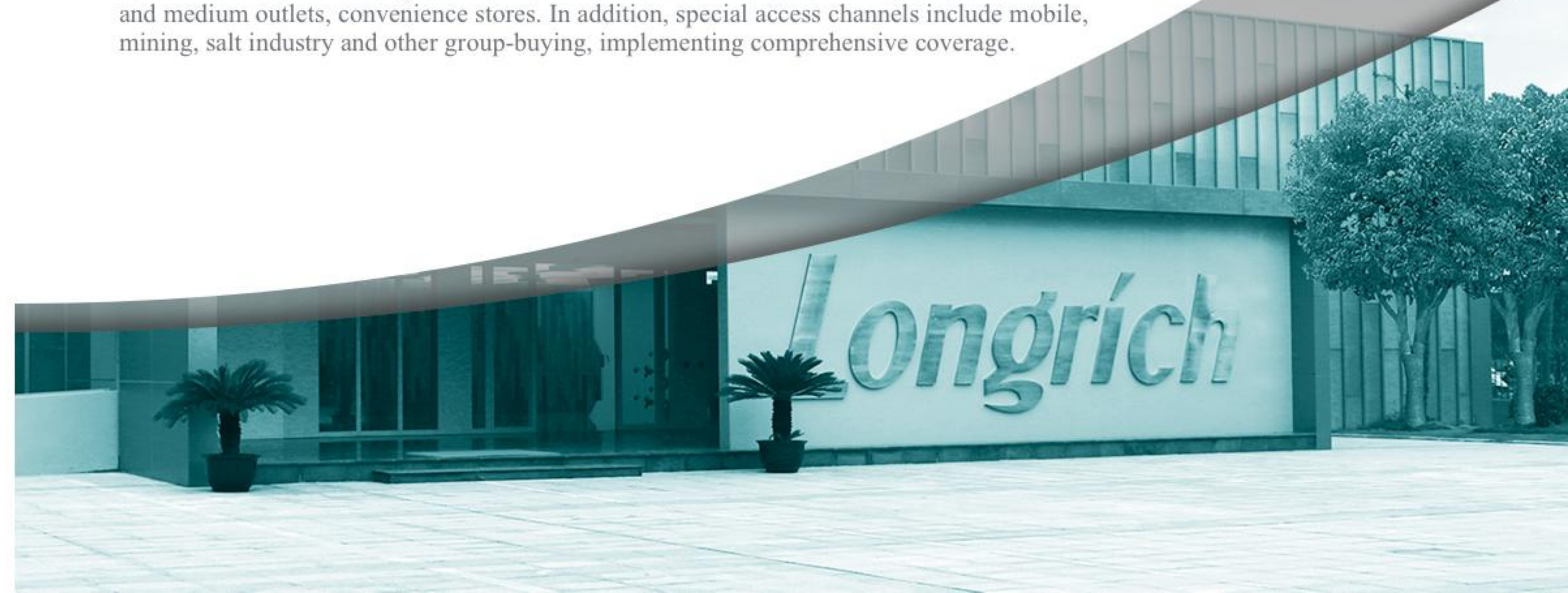
Longrich: Service Achieves Excellence

Longrich treats customers (consumers), employees, and society as its gods, and view unlimited service as its operational concept. Longrich employs this sort of idea to lead the its overall arrangement, shape its brand image, measure people's talent, unify its employees and customers, standardize employees' behavior, win competition, and motivate ourselves.

Your interests will be fully protected by Longrich's first-class management team, profound cultural background, accurate product positioning, strict product testing, highly effective logistics service, reliable product quality, good after-sales service, and broad spectrum of development. This will afford you the opportunity to enjoy a healthy and beautiful lifestyle and it will also make your personal career journey become easier at the same time.

Longrich: Daily Chemical Products Help Blossom

Longrich's daily chemical business is an important channel of Jiangsu Longrich Bioscience Co., Ltd., which adopts a professional and perfect business division model to carry out its business. The Daily Chemical Business Division has complete supporting functions such as sales service, brand planning, product promotion, financial tracking, planning and supply, and customer service. The product line covers skin care products, personal care products, home care products, and child care products. The advantages of these products are prominent. The sales of hand cream has been ranking the first in the industry for 11 consecutive years, and the sales of snake oil cream, fragrance water, and SOD milk is leading in their industries. The channels of daily chemical products cover a wide range. The modern retail channels include: international and domestic KA stores, local chain supermarkets, exclusive outlets, daily chemical chain stores and other terminal outlets, while daily chemical channels include: wholesale market, circulation small and medium outlets, convenience stores. In addition, special access channels include mobile, mining, salt industry and other group-buying, implementing comprehensive coverage.





PRODUCT PRESENTATION

Skin Care
Cream & Lotion





SOD

SHEEP PLACENTA SOD MILK

Moisturizes & Smoothes



LONGRICH SOD

SHEEP PLACENTA SOD MILK

MOISTURIZES & SMOOTHES



Efficacies:

A deep layer skin care product that keeps your skin plump and firm, prevents it from aging and growth of wrinkles, keeping the skin soft, delicate and beautiful.

Effect:

The milk which easily penetrate your skin, plays a role in protecting and improving your skin texture. Your skin will become tender and delicate again after applying this milk.

Usage:

After washing your face, put an appropriate amount of the milk on your hands, rub them together and then massage your face with both hands. The cream can be applied over the whole body.

Storage:

Place in a cool, dry place. Keep away from direct sunlight and heat.

Caution:

Stop use immediately if rash or irritations occur.

Ingredients: WATER, GLYCERIN, MINERAL OIL, ISOPROPYL PALMITATE, CETEARYL ALCOHOL, GLYCERYL STEARATE, POTASSIUM LAURYL PHOSPHATE, DIMETHICONE, PARFUM, CARBOMER, PHENOXYETHANOL, 2-BROMO-2-NITROPROPANE-1,3-DIOL, SODIUM HYDROXIDE, PROPYLENE GLYCOL, METHYLPARABEN, ETHYLHEXYLGLYCERIN, ETHYLPARABEN, BHT, HYDROLYZED SHEEP PLACENTA EXTRACT, TOCOPHERYL ACETATE, LECITHIN, SUPEROXIDE DISMUTASE, PENTYLENE GLYCOL, OCTANEDIOL





LONGRICH
BRIGHTENING
HAND CREAM
SOFT & SMOOTH
CONTAIN VITAMIN ESSENCE



Efficacies:

Which can moisture hand skin, keep the skin brightening, smoothing, softening and high resilience.

Effect:

The hand cream which easily penetrate your skin, keeps vitamin more stable which is easier to be absorbed.

Usage:

Apply appropriate amount onto hand skin evenly and massage gently after washing your hands.

Directions:

Evenly apply on clean hands, massage gently for full absorption.

Caution:

Discontinue use immediately if irritations or sensitivities occur.

Storage:

Place in a cool, dry place. Keep away from direct sunlight and heat.

Ingredients: WATER, GLYCERIN, MINERAL OIL, ETHYLHEXYL PALMITATE, DIMETHICONE, PETROLATUM, GLYCERYL STEARATE, PEG-100 STEARATE, CETEARYL ALCOHOL, POLYSORBATE 80, TOCOPHERYL ACETATE, ALLANTOIN, POLYSORBATE 85, ASCORBYL GLUCOSIDE, RETINYL PALMITATE, ACRYLATES/ACRYLAMIDE COPOLYMER, FRAGRANCE, PHENOXYETHANOL, ETHYLHEXYLGLYCERIN, METHYLPARABEN, LACTOSE, CELLULOSE, CAPRYLYL GLYCOL, HYDROXYPROPYL METHYLCELLULOSE, PROPYLPARABEN, SILICA, CAPRYLIC/CAPRIC TRIGLYCERIDE, BHT, GERANIOL, BENZYL BENZOATE, CITRONELLOL, HEXYL CINNAMAL, BUTYLPHENYL METHYLPROPIONAL, LIMONENE, LINALOOL, ALPHA-ISOMETHYL IONONE, ULTRAMARINES (CI77007)



Hydrates & Softens
REJUVENATING BODY LOTION



Cereal Extract



Snake Collagen

- ALL SKIN TYPES ARE APPLIED
- SUPER ABSORBABLE
- INCLUDE NANO SNAKE OIL & SOD LIPOSOME

Rejuvenating Body Lotion
Snake Collagen
Cereal Extract
Hydrates & Softens

LONGRICH
REJUVENATING
BODY LOTION
Snake Collagen
Cereal Extract
Hydrates & Softens



- It is applied to all skin types and is able to moisturize dry skin, remove wrinkles.
- The nano snake oil improves the moisture of skin and SOD liposome helps revitalize skin. The lotion is easy to spread and super absorbable. It refreshes yourself with its slight fragrance while rejuvenating your skin.

Formulated with snake collagen, the Rejuvenating Body Lotion helps soften rough skin, and builds a protective barrier on skin surface to lock in moisture. Skin feels moist, smooth and soft.

Directions:

Apply evenly on hands, legs or other skin areas after bath, massage gently for full absorption.

Caution:

Keep it out of reach of children. Do not swallow. Do not use this product if you are experiencing skin conditions like injuries, swellings, etc. Cautious use and skin test are advised for people suffering allergies. Discontinue use immediately if irritations or sensitivities occur or persist after use.

Storage:

Place in a cool, dry place. Keep away from direct sunlight and heat.

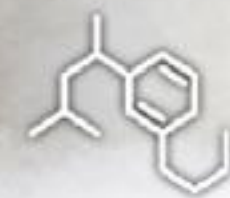
Ingredients: AQUA, GLYCERIN, MINERAL OIL, CETEARYL ALCOHOL, ISOPROPYL PALMITATE, GLYCERYL STEARATE, POTASSIUM LAURYL PHOSPHATE, DIMETHICONE, HYDROLYZED COLLAGEN, HYDROLYZED SOY PROTEIN, COIX LACRYMA-JOBI MA-YUEN EXTRACT, AVENA SATIVA (OAT) KERNEL EXTRACT, BHT, DIAZOLIDINYL UREA, PENTYLENE GLYCOL, BUTYLENE GLYCOL, CARBOMER, PHENOXYETHANOL, METHYLPARABEN, ETHYLPARABEN, ETHYLHEXYLGLYCERIN, PROPYLENE GLYCOL, SODIUM HYDROXIDE, PARFUM, 2-BROMO-2-NITROPROPANE-1, 3-DIOL



Active Nutrition Complex



Exceptional Moisturizing Formula



SHEEP PLACENTA EXTRACT SOD MILK

Rejuvenates & Nourishes



LONGRICH Sheep Placenta Extract SOD MILK

Exceptional Moisturizing Formula
Active Nutrition Complex
Rejuvenates & Nourishes



- Unleash skin's innate ability to rejuvenate. Provide fast relief for tense, parched skin. Formulated with SOD Active Nutrition Complex that has great affinity with skin, the Milk meets your skin's intense desire for ultra smoothness and softness.
- Contains glycerin and SOD liposome, replenishes much-needed nutrients and moisture for dry, rough skin, leaving skin exuding natural luster afresh. Sheep Placenta Extract helps increase skin suppleness and softness. Lightweight, lotion-textured formula feels non-oily, highly absorbable and ideal for everyday use.

Directions:

Apply evenly on clean face, hands and other skin areas, gently massage for better absorption.

Caution:

Keep it out of reach of children. If irritations occur, please discontinue use immediately.

Storage:

Place in a cool, dry place. Keep away from direct sunlight and heat.

Ingredients: AQUA, GLYCERIN, MINERAL OIL, ISOPROPYL PALMITATE, CETEARYL ALCOHOL, GLYCERYL STEARATE, POTASSIUM LAURYL PHOSPHATE, DIMETHICONE, HYDROLYZED SHEEP PLACENTA EXTRACT, TOCOPHERYL ACETATE, SUPEROXIDE DISMUTASE, LECITHIN, CARBOMER, PARFUM, SODIUM HYDROXIDE, ETHYLHEXYLGLYCERIN, ETHYLPARABEN, METHYLPARABEN, PHENOXYETHANOL, PROPYLENE GLYCOL, 2-BROMO-2-NITROPROPANE-1,3-DIOL, BHT



Nature·ICON

Natural Extract

Corn germ oil + fruit oil



**FRUIT OIL
MOISTURIZING
BABY CREAM**



**2 IN 1
BABY SHAMPOO
AND BODY WASH**



**CORN PRICKLY
HEAT POWDER**



LONGRICH
Natural Extract
Fruit Oil
Moisturizing Baby Cream



Fine mild formula specially intended for children's delicate skin. Enriched with corn germ oil, plant essence, and shea butter extract, it helps nourish and moisturize skin gently and deeply with no irritation to skin, leaving baby's skin feeling silky smooth, soft and comfortable.

Directions for use:

After bath or when skin feels dry, apply suitable amount to the entire body and gently massage till full absorption; Use every day to keep your baby's skin soft, fine and smooth.

Caution:

Keep out of the reach of children to avoid being swallowed;

Stop use and consult dermatologist in case of any discomfort and abnormalities.

Storage:

Place in a cool, dry place. Keep away from direct sunlight and heat.

Ingredients: WATER, MINERAL OIL, GLYCERIN, CETEARYL ALCOHOL, CAPRYLIC/CAPRIC TRIGLYCERIDE, DIMETHICONE, GLYCERYL STEARATE, CETEARYL GLUCOSIDE, BUTYROSPERMUM PARKII (SHEA BUTTER), LECITHIN, ZEA MAYS (CORN) GERM OIL, XANTHAN GUM, SODIUM STEAROYL GLUTAMATE, ALLANTOIN, TOCOPHERYL ACETATE, SNAKE (SERPENTES SPP.) GALL EXTRACT, ALCOHOL, PHENOXYETHANOL, ETHYLHEXYLGLYCERIN, CAPRYLYL GLYCOL, FRAGRANCE, BENZYL ALCOHOL, BENZYL BENZOATE





LONGRICH Natural Extract 2 in 1

Baby Shampoo & Body wash



For Mild formula specially intended for children's delicate skin. Formulated with natural herbal extracts, it cleans gently and lovingly, with very little irritation to baby's eyes and skin. Enriched with natural corn germ oil and fruit extract, it refreshes and nourishes your baby's skin gently, leaving skin feeling cool and comfortable.

Directions for use:

Take a suitable amount of this product in the palm of your hand, gently rub it on the whole body, rinse off with clean water, then dry with a soft clean towel.

Caution:

Keep out of reach of children. Do not swallow.

Stop use and consult dermatologist in case of any discomfort and abnormalities.

Storage:

Keep in cool dry place and avoid direct sunlight.

Ingredients: WATER, SODIUM LAURETH SULFATE, COCAMIDOPROPYL BETAINE, GLYCERIN, PEG-80 SORBITAN LAURATE, SODIUM LAUROAMPHOACETATE, DECYL GLUCOSIDE, CITRUS RETICULATA (TANGERINE) PEEL EXTRACT, ZEA MAYS (CORN) GERM OIL, SOYBEAN LECITHIN, PEG-120 METHYL GLUCOSE DIOLEATE, PEG-40 GLYCERYL COCOATE, BUTYLENE GLYCOL, POLYQUATERNIUM-10, MAGNESIUM CHLORIDE, SODIUM CHLORIDE, MAGNESIUM NITRATE, CAPRYLYL GLYCOL, SODIUM COCETH SULFATE, CITRIC ACID, PARFUM, METHYLCHLOROISOTHIAZOLINONE, METHYLISOTHIAZOLINONE, PROPYLPARABEN, METHYLPARABEN, DIAZOLIDINYL UREA



LONGRICH Natural Extract Corn Prickly Heat Powder *Cool & Refreshing*



Formulated with mild natural plant starch, this product is gently on skin, helps reduce prickly heat and itch, eliminates sweat odor, and leaves skin feeling smooth, soft, and comfortably dry.

Directions for use:

After bath, apply suitable amount of this powder onto skin with puff.

Caution:

Avoid inhalation; Do not apply it on injury or damaged skin; Avoid contact with eyes; Keep out of reach of children; Children should not use it unless under adult's supervision.

Storage:

Place in a cool, dry place. Keep away from direct sunlight and heat.

Ingredients: ALUMINUM STARCH OCTENYLSUCCINATE, ZEA MAYS STARCH, TRICALCIUM PHOSPHATE, SULFUR, BENZOIC ACID, METHYLPARABEN, DIPOTASSIUM GLYCYRRHIZATE, THYMOL, MENTHOL, CAMPHOR, POLLEN PINI, HELIANTHUS ANNUUS SEED OIL, TOCOPHEROL.





ANTIPERSPIRANT DEW

REFRESHING ODOR
AND KEEP FRESH



LONGRICH ANTIPERSPIRANT DEW

Refreshing Odor
& Keep Fresh



It contains antiperspirant complex, combats sweat and odor effectively, keeps you refreshed. Aloe extracts provide moisture and protection for the skin. Mild, skin-loving formula is suitable for all skin types.

1. Anti-Perspirant deodorant: containing an effective anti-perspirant cooling factor can effectively reduce underarm sweat and eliminate sweat odor;
2. Relaxing Fragrance: fresh and elegant, floral and fruity, comfortable feeling throughout the day, fragrant and full of self-confidence;
3. Mild stimulation: pH value skin-friendly formula, gentle with no residue, quick-drying, non-sticky for all types of skin;
4. Easy to use: compact, ball-type shape, just open the bottle, gently roll the bulk of the ball under the arm, and you can produce a cool and pleasant fragrance.

Warnings:

Do not apply to damaged or inflamed skin. Stop using this product if you develop redness or itching.

Storage:

Place in a cool, dry place. Keep away from direct sunlight and heat.

Ingredients: AQUA, ALUMINUM CHLOROHYDRATE, GLYCERIN, STEARETH-21, CYCLOPENTASILOXANE, CETEARYL ALCOHOL, STEARETH-2, CYCLOHEXASILOXANE, GLYCERYL STEARATE, PARFUM, DIAZOLIDNYL UREA, PROPYLENE GLYCOL, ALLANTOIN, METHYL PARABEN, HAMAMELIS VIRGINIANA WATER, MENTHOL, PROPYL PARABEN, ALOE BARBADENSIS LEAF JUICE POWDER, LIMONENE, BUTYLPHENYL METHYLPROPIONAL, LINALOOL.





Snake Oil



LONGRICH

Snake Oil Essence

Moisturizes & Nourishes & Repairs
SNAKE OIL TREATMENT SERUM #1



Formulated with premium snake oil and a synergistic blend of plant extracts, Longrich Snake Oil Serum No.1 is a multi-action protective lotion that can be used as part of your daily skin/hair care regimen, post-bath massage oil or makeup removal facilitator.

Directions for use:

1. For skincare, apply to face or hands evenly as part of daily skincare routine.
2. For hair care, apply to hair after hair wash to improve its manageability.
3. For body care, apply to your back and body areas evenly after bath, massage to improve absorption.
4. For makeup removal assistance, apply to your face evenly avoid eyes area and massage gently before normal makeup removal ritual so as to achieve better cleansing results.

Caution:

Keep out of reach of children. In case of sensitivities or irritations, discontinue use immediately. It is normal that a tiny amount of oil may be found on the container in cold weather due to osmosis.

Storage:

Place in a cool, dry place. Keep away from direct sunlight and heat.

Ingredients: MINERAL OIL, SNAKE (SERPENTES SPP.) OIL, CAMELLIA OLEIFERA SEED OIL, OLEA EUROPAEA (OLIVE) FRUIT OIL, SIMMONDSIA CHINENSIS (JOJOBA) SEED OIL, TOCOPHERYL ACETATE, FRAGRANCE, BHT, D&C Yellow No. 11(CI 47000)





Snake Oil



LONGRICH Snake Oil

Moisturizes & Repairs
Multi-Action
SNAKE OIL No.1



Snake Oil Gel #1 is a multi-action, snake-oil-based protection lotion that provides intensive care for your skin and body.

Directions for use:

Skin Care: Helps moisturize and nourish skin, makes skin feel soft, smooth and moist.

Body Care: Uses it as massage oil after bath, helps lock in moisture, moisturizing dry skin, leaving skin feeling moist, soft and smooth.

Caution:

Keep out of reach of children. In case of sensitivities or irritations, discontinue use immediately. It is normal that a tiny amount of oil may be found on the container in cold weather due to osmosis.

Storage:

Place in a cool, dry place. Keep away from direct sunlight and heat.

Ingredients: WATER, GLYCERIN, SNAKE(SERPENTES SPP.)OIL, LECITHIN, SODIUM HYALURONATE, POLYSORBATE 20, CARBOMER, TRIETHANOLAMINE, FRAGRANCE, METHYLPARABEN, DIAZOLIDINYL UREA, FD&C Yellow No. 6(CI 15985), FD&C Yellow No. 5(CI 19140)





PRODUCT PRESENTATION

Oral Care
Toothpaste & Mouthwash



White Tea Multi-Effect Toothpaste



Healthy gums

Teeth whitening and cavity prevention



LONGRICH *White Tea* Multi-Effect TOOTHPASTE

Healthy Gums
Teeth Whitening and Cavity Prevention



One toothpaste, Triple effects

1. Fluorine-free decay resistance: white tea essence prevents decay and improves dental roots conditions;
2. Deep cleansing: the antiseptic and soft silicon abrasives give you a clean mouth with white teeth and fresh breath;
3. Gum strengthening: strontium chloride and composite aloe extract protects you against teeth sensitivity (cold, heat, acidity and sweetness)

Multiple Effects:

- *Natural peppermint flavor helps freshen breath
- *White tea extracts help protect gums
- *Xylitol helps strengthen teeth

Directions for use:

- ① Squeeze desired amount onto toothbrush, brush teeth and rinse clean
- ② Brush your teeth at least twice a day
- ③ Suitable for all ages from 2 years onwards.

Caution:

Do not swallow, When used by children under 6, adult supervision is required.

Storage:

Place in a cool, dry place. Keep away from direct sunlight and heat.

Ingredients: WATER, SORBITOL, HYDRATED SILICA, GLYCERIN, SODIUM LAURYL SULFATE, XYLITOL, PEG-32, PARFUM, MENTHONE GLYCERIN ACETAL, CELLULOSE GUM, XANTHAN GUM, SODIUM SACCHARIN, CALCIUM GLYCEROPHOSPHATE, STRONTIUM CHLORIDE HEXAHYDRATE, TRISODIUM PHOSPHATE, MENTHOL, MALTODEXTRIN, ALOE BARBADENSIS LEAF JUICE, CAMELLIA SINENSIS LEAF EXTRACT, LACTIC ACID, SODIUM BENZOATE, POTASSIUM SORBATE, CI 77891, CI 42090



ADP-1

13 YEARS OF RESEARCH

PROBIOTIC TECHNOLOGY



LR

EAST MIRACLE
Ultra Protection Probiotic
TOOTHPASTE
Probiotics Science



Specially formulated with ADP1 probiotics, helps balance oral flora, reduce plaque, brighten teeth, freshen breath, protect periodontal health. Infused with zinc ions and micro-abrasives to protect gums and enamel.

Note:

The ingredient marked with asterisk is lactobacillus paracasei.

Directions for use:

Use pea-sized toothpaste, brush for 2 or 3 minutes, use daily for best results.

Caution:

Keep out of reach of children.

Storage:

Place in a cool, dry place. Keep away from direct sunlight and heat.

Ingredients: WATER, SORBITOL, HYDRATED SILICA, GLYCERIN, PEG-32, SODIUM LAURYL SULFATE, PARFUM, ZINC CITRATE, COCAMIDOPROPYL BETAINE, LACTOBACILLUS*, CELLULOSE GUM, HYDROXYETHYLCELLULOSE, TRANEXAMIC ACID, SODIUM SACCHARIN, CAPRYLYL GLYCOL, 1,2-HEXANEDIOL, SODIUM HYDROXIDE, CI 77891





East Miracle
Ultra Protection Probiotic
Mouthwash



LR

EAST MIRACLE
Ultra Protection Probiotic
MOUTHWASH
Probiotics Science



Formulated with ADP-1 probiotics, helps balance oral flora, freshens breath effectively.

Note:

The ingredient marked with asterisk is *Lactobacillus paracasei*.

Directions for use:

Fill bottle cap, pour into mouth, gargle for 20 seconds and spit out.

Caution:

Do not swallow. Discontinue use and seek medical attention in case of any discomforts experienced. Adult supervision is required when used by children.

Storage:

Place in a cool, dry place. Keep away from direct sunlight and heat.

Ingredients: WATER, SORBITOL, POLOXAMER 407, PARFUM, LACTOBACILLUS*, CAPRYLYL GLYCOL, 1,2-HEXANEDIOL, TETRASODIUM EDTA, SODIUM CHLORITE, SODIUM BICARBONATE, SODIUM BENZOATE



Longrich

Mouth Freshener



LONGRICH
Mouth Freshener
Keep your mouth fresh & healthy



Contains white tea extracts and peppermint essence, protects mouth, eliminates oral odor, leaves breath ultra fresh.

Directions for use:

Hold the container vertically and spray directly into mouth.

Caution:

Keeep it out of reach of children. If irritations occur, discontinue use immediately.

Storage:

Place in a cool, dry place. Keep away from direct sunlight and heat.

Ingredients: WATER, GLYCERIN, ALCOHOL, PEG-40 HYDROGENATED CASTOR OIL, POLYSORBATE 20, MENTHA PIPERITA (PEPPERMINT) OIL, MENTHONE GLYCERIN ACETAL, ASPARTAME, HAKKA YU, MENTHOL, TRISODIUM PHOSPHATE, VANILLIN, CAMELLIA SINENSIS LEAF EXTRACT, LACTIC ACID, SODIUM BENZOATE, POTASSIUM SORBATE





PRODUCT PRESENTATION

Health Care Appliance
Pot & Cup





Classy Style Pot

With World's Leading
Green Health Technology



Pot Lid

Lid design. Practical, safe, economical, followed by good looking. The holder of the lid is a cylindrical-shape stainless steel ending up with a small circle. Therefore, the lid can be left slowly by hand without using a insulated liner.



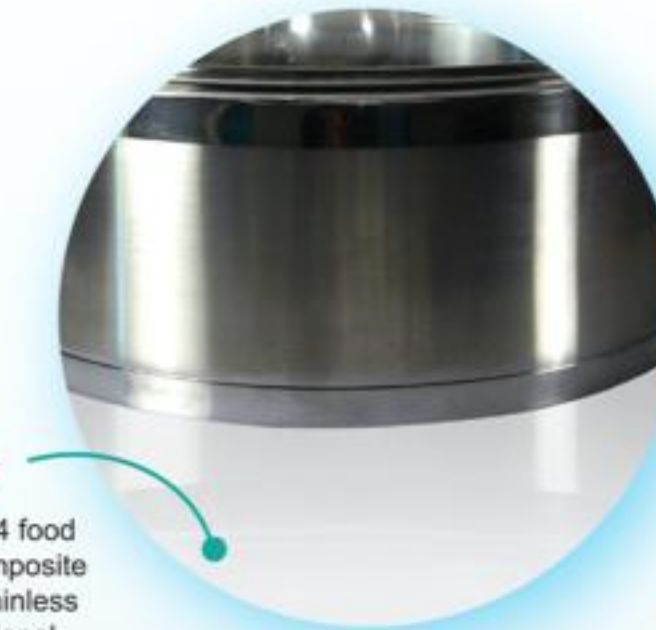
Pot Handle

For the stainless steel handle of the steel pot, heat does not stay on the handle. The pot can just be taken without using any insulated liner. It is as easy as just holding the handle directly and then move the cookware.



Pot Body

The pot is made of model 304 food grade stainless steel. The composite bottom layer is model 430 stainless steel. They all meet the national standards..



gas stove



electric
stove



Hot stove



Electromagnetic
Stove

By not adding any flavoring, a mixed dish of chicken, fish, seafood, vegetables and tofu is still tasty and not oily. The soup looked clear and the food is soft and delicious. Vegetables cooked with the pot remain green. There is no sediment at the bottom of the pot after cooking the soup. The best thing is that the food is tasted as it is.





Double layer tailless vacuum:
high-tech insulation, up to 6-8 hours.

High-net cartridge :
mainly consists of single crystal grade rough ground tourmaline, negative ion ball, tourmalines, which have functions of weakly alkaline, create negative potential and provide high oxygen content.

Inner wall and housing:
apply food-grade environment-friendly special steel, longer lasting and safer.

Combination of double cartridge:
combination of high-net and low-net cartridge to achieve different functions and greater effects.

Low-net cartridge:
mainly consist of π stone, KDF cartridge material, far infrared ball, which enrich zinc, stimulate small molecules activity, create negative ions, eliminate chlorine and harmful heavy metals. Low-net cartridge is permanently effective without replacement.





PRODUCT PRESENTATION

Commodity
Sanitary Napkin
& Baby Diaper



SuperbKlean

Magnetic Sanitary Napkin



Super
Absorption

Comfortable
& Breathable

Eliminate
Odour

Far
Infrared
Ray

Bio-
magnetism

Anions



Perfect 8 Layer Protection

Giving You Considerate Care!



ISO9001 | US FDA | Patent Technology Strip | Magnetic Energy | Far Infrared | Negative Ion | Eight Layer



5D Energy Baby Diapers



S 28 Diapers
Fit for 4-8KG

M 26 Diapers
Fit for 6-11KG

L 24 Diapers
Fit for 9-14KG

XL 22 Diapers
Fit for 12-17KG

5D Energy Baby Diapers



Double T Design
Full Protection



4cm

The second generation of side leakage prevention technology, it makes baby more comfortable.



Soft and Elastic
Waistline

Let the baby feel free!



PRODUCT PRESENTATION

Healthy Care
Health Care Products





LONGRICH *Calcium/Iron/Zinc* CHEWABLE TABLETS



The tablets can be taken to supplement calcium, iron and zinc for healthcare purposes.

Content :

Each Tablet contains 170mg calcium, 3, 12mg iron and 2.8mg zinc

Health function :

Calcium, iron and zinc supplement.

Appropriate to children ages 4-10 and teenagers aged 11-17 as well as adult in need of calcium iron and zinc supplement

Inappropriate to children ages below 4 and women during early and late pregnancy

Dosage and administration :

Children ages 4-10 take one tablet twice a day by chewing.

Storage:

Place in a cool, dry place. Keep away from direct sunlight and heat.

Ingredients: CALCIUM CARBONATE, IRON (II) FUMARATE, ZINC OXIDE, GLYCERIN, D-MANNITOL, MILK POWDER, MAGNESIUM STEARATE, MALTODEXTRIN, SILICON DIOXIDE, MILK FLAVOR





Dreamy Beauty Capsules

Dietary Supplements



LONGRICH *Dreamy Beauty* Capsules



Longrich Dreamy Beauty Capsules is mainly formulated with Zaocys Dhumnares, Agkistrodon Halys and Hydrolytic Pearl powder. Functional experiments have proved that it has the function of improving look (Removing chloasma) and postponing senility.

Health & Beauty Benefits:

Helps remove the appearance of chloasma and delay aging. Ideal for the middle-aged/elderly people and/or those who suffer chloasma.

Suitable for:

The elders and people with chloasma.

Caution:

This product is not intended to diagnose, treat, cure or prevent any disease. Not suitable for use by children, teenagers and pregnant/nursing women.

Suggested Use:

Take 2 or 4 capsules on empty stomach every AM and PM.

Storage:

Place in a cool, dry place. Keep away from direct sunlight and heat.

Ingredients: ZAOCYS DHUMNADES, AGKISTRODON HALYS, HYDROLYTIC PEARL POWDER





Vigor Boost Powdered Snake Capsules

Dietary Supplements



LONGRICH *Vigor Boost* Powdered Snake Capsules



Longrich Vigor Boost Powdered Snake Capsules is made from Zaocys Dhumnares, Agkistrodon Halys and snake penis, functional experiments have proved that it has the function of adjusting immunity and eliminating fatigue .

Health Benefits:

Helps regulate immunity and combat fatigue.

Ideal for men who have weak immune system or are prone to fatigue.

Suitable for Men :

Men with low immunity and easily tiring

Caution:

This product is not intended to diagnose, treat, cure or prevent any disease. Not suitable for use by children, teenagers and women.

Suggested Use:

Take 4 capsules with warm water every evening.

Storage:

Slace in a cool, dry place. Keep away from direct sunlight and heat.

Ingredients: ZAOCYS DHUMNADES,
AGKISTRODON HALYS, MALE SNAKE GENITALS



Shenxing Seabuckthorn Berry Oil Softgels

Dietary Supplements

Best Antioxidant Supplement from Perfect Combination with science-technology and natural plant.



* *Completely Natural*



* *Promote Healthy Liver*



* *Great Immune Booster*



* *Protect Stomach*

☒ **Vegetable Softgels**

☒ **Non-GMO**

☒ **Gluten-free**



BAOHETANG
Shenxing
Seabuckthorn
Berry Oil Softgels



1. Completely Natural. Sea buckthorn. It contains VE that is more than 100 times stronger than synthetic VE (natural VE contains four kinds of totaxin, namely α , β , γ , δ ; Synthetic VE contains only a totaxin; Anti-oxidation effect of δ totaxin is more than 100 times stronger than a totaxin)

2. High Enrichment. One ton of sea buckthorn seeds extracted from 20tons of sea berry buckthorn berries. One ton of sea buckthorn berry oil extracted from 20tons of sea buckthorn seeds. i.e. 100kg of sea buckthorn berries are required to produce 250ml of sea buckthorn berry oil only.

3. Advanced Extraction Technology. Sea buckthorn berry oil uses internationally advanced, supercritical CO2 extracting technology during production. Effectively protect the active ingredients in the material cannot be damaged. It is high extraction rate and high purity.

Dosage and Administration :

Take 3 capsules every morning and evening respectively on empty stomach

suitable for :

People with low immunity or suffering from chemical-induced liver damage

Effects :

Improve immunity, protect liver from chemical - induced damage

content :

Each 100g contains: Vitamin E 105mg, carotenoid 165mg

Storage:

Place in a cool, dry place. Keep away from direct sunlight and heat.

Ingredients: SEA BUCKTHORN FRUIT OIL, GELATIN, PURIFIED WATER, GLYCEROL



VITAMIN C CHEWABLE TABLET

ORANGE FLAVOR



Functional component and content:

Each tablet contains 213.0 mg of vitamin C.

Suitable Users:

Adults who need to supplement Vitamin C.

Unsuitable Users:

People who are under the age of 17 and the pregnant women and women who are in the lactation period.

Health-care Function:

Supplementation of vitamin C.

Dosage and taking manner:

One tablet per time, and one time per day; Taking manner: Chew to take it.

Attention:

This product is no substitute for medicine. This product is not recommended for people who are not Suitable Users. It is not recommended to take a dosage that exceeds the recommended amount or to take this product along with other nutrients of the same kind; Patients with phenylketonuria should use with caution.

Storage:

Keep it sealed and stored in a cool and dry place

Ingredients: L-ASCORBIC ACID

Excipients: SORBITOL, MAGNESIUM STEARATE, ASPARTAME (NAMESLY, N-(L-A-ASPARTYL)-L-PHENYLALANINE, 1-METHYL ESTER), TARTRAZINE ALUMINUM LAKE, SUCRALOSE, MILK ESSENCE, SWEET ORANGE ESSENCE



NutriVRich

Nutrition Shake Mix
Slimming Shake Mix



Nutrition

Upgraded Meal Replacement Formula



BAOHETANG
NutriVRich
Nutrition Shake Mix
Slimming Shake Mix



- NutriVRich(Nutrition) is made from various natural raw foods from certified organic farms in South Korea, containing balanced nutritional components.
- NutriVRich is rich dietary Fiber and chlorophyll, effectively controlling blood glucose and improving constipation.
- NutriVRich is easy to intake and digest. It meets WHO diabetic min GI (Blood glucose index ≤ 55). Each serving of NutriVRich GI index is at 43.
- NutriVRich helps diabetic patients get required nutritional components by replacing traditional meals throughout the day.
- With a low calorie of 156kcal (1/10 of the daily calorific requirement) and 33 grams of carbohydrates per pouch, NutriVRich will help you control weight and keep healthy.

- NutriVRich(Slimming) Vegefruit Instant Drink offers you an effective way to improve health and control weight. It contains various nutrition derived totally from organic vegetables and fruits.
- NutriVRich in pink is becoming a symbol of beauty style and health all over the world.

Directions for Use:

1. 1 sachet for sub-health group in the morning mix with 200ml drinking water.
2. Half sachet for child above age 7 and 1 sachets for teenager above age 14.

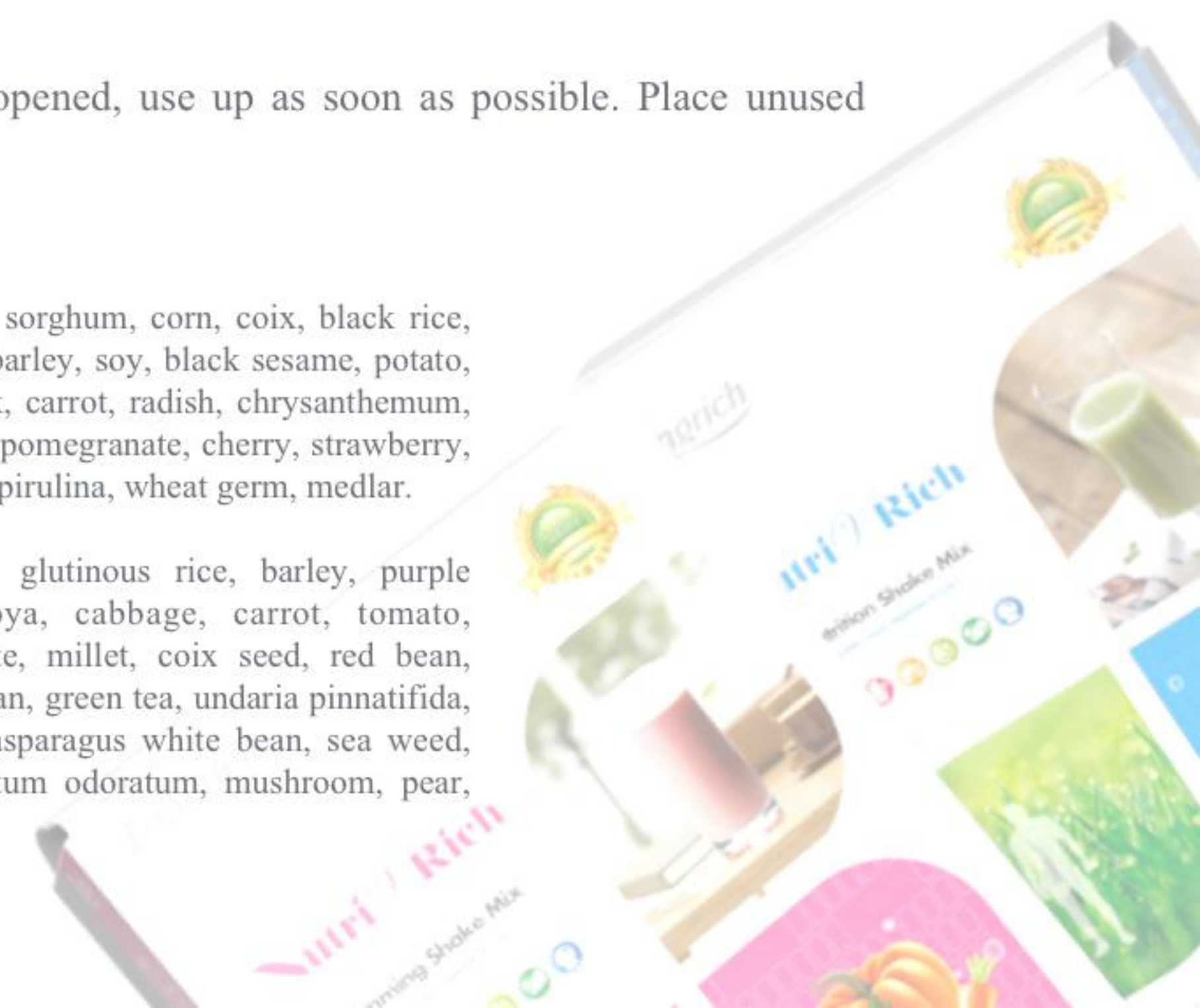
Take note: Not recommended for CKD patients, do not mixed with coffee, soft drinks and liquor

Storage:

Store in a cool, dry place. If opened, use up as soon as possible. Place unused products in refrigerator.

Main Ingredients: brown rice, sorghum, corn, coix, black rice, red bean, glutinous rice, black bean, barley, soy, black sesame, potato, kale, cabbage, cress, cauliflower, leek, carrot, radish, chrysanthemum, pumpkin, mangosteen, tomato, grape, pomegranate, cherry, strawberry, mushroom, seaweed, wakame, yeast, spirulina, wheat germ, medlar.

Main Ingredients(slimming): glutinous rice, barley, purple cabbage, beet, rice, pumpkin, soya, cabbage, carrot, tomato, broomcorn, soy protein, pomegranate, millet, coix seed, red bean, apple, pomelo, tumip leaves, black bean, green tea, undaria pinnatifida, salt, lactobacillus acidophilus, nori, asparagus white bean, sea weed, coconut juice, peppermint, polygonatum odoratum, mushroom, pear, garland chrysanthemum.



虫草

Cordyceps Militaris Capsules



BAOHETANG Cordyceps *Militaris Capsule*



Embrace Vitality Natural Energy

Longrich baohetang Chinese caterpillar has been jointly developed by Tsinghua University-Longrich Biological Technology Institute, Longrich (USA) Health and Cosmetics Research Institute;

Product Quality Assurance, it contains a high of 1.1% cordycepin which is 300% far better than those common cordyceps sinensis;

Advanced enrichment process, the product cultured in sterile environment. With anti-aging and tumor inhibition, improves blood circulation and enhance immunity.

Health Benefits:

Boosts your immune system. Ideal for people who need to enhance their immune system.

Suggested Use:

Take 2 capsules daily.

Caution:

This product is not intended to diagnose, treat, cure or prevent any disease. Not suitable for use by children, pregnant or nursing women.

Storage:

Place in a cool, dry place. Keep away from direct sunlight and heat.

Ingredients: POWDERED CORDYCEPS MILITARIS, POLYSACCHARIDES, CORDYCEPIN AND ADENOSINE.



Vintage Liquor

Longrich Vintage Liquor

It offers customer the sophistication of a liquor.



LONGRICH Vintage Liquor



Formulated with Longrich signature snake-based liquor and fortified with functional plant ingredients (safflower, papaya, cortex acanthopanax), Longrich Tonic Liquor helps enhance your immune system and protect your general health. Ideal for people who need to enhance their immune system and improve their overall wellness.

1. Safflower helps improve blood circulation, relieve myocardial ischemia, combat fatigue and rheumatism.
2. Cortex Acanthopanax helps strengthen bones, relieve rheumatism, arthritis and blood stasis.
3. Papaya helps relax muscles, boost libido and relieve rheumatism, numbness and joint disorder.

Liquor helps boost vitality, blood circulation and immune system.

Suggested Use:

Drink 30ml-50ml daily.

Caution:

This product is not intended to diagnose, treat, cure or prevent any disease. Shake well before use. Do not exceed the recommended daily allowance. Not suitable for children, pregnant women and those who suffer cardio-cerebrovascular diseases or are allergic to alcohol.

Storage:

Place in a cool, dry place. Keep away from direct sunlight and heat.

Ingredients: ZAOCYS DHUMNADES, AGKISTRODON HALYS, SAFFLOWER, CORTEX ACANTHOPANACIS, PAPAYA, LIQUOR.



Arthro SupReviver

- Synovial Membrane*
- Cartilage*
- Synovial Fluid*
- Capsule & Ligaments*



LONGRICH
Arthro
SupReviver



Promotes Overall Joint Health

Formulated with glucosamine, chondroitin, hyaluronic acid and ginger extracts, Longrich Arthro SupReviver provides essential nutrients to support joint health, promote joint comfort, recover damaged cartilage and connective tissue of joint, and boost joint mobility.

Longrich Arthro SupReviver is an effective dietary supplement for joint health. The randomized, double-blind, placebo-controlled clinical trials have shown this product may significantly improve overall joint health and performance.

Each 100g of this dietary supplement contains 7.5 g of tea polyphenol and 35 g of glucosamine.

Suggested Use:

Take 3 tablets twice daily.

Caution:

KeeP out of the reach of children. Do not use if safety seal is damaged or missing. Not suitable for children and pregnant women.

Storage:

Place in a cool, dry place. Keep away from direct sunlight and heat.

Ingredients: GLUCOSAMINE HYDROCHLORIDE, CHONDROITIN SULFATE, GINGER EXTRACTS, TEA POLYPHENOL, STARCH, MAGNESIUM STEARATE.





Cordyceps Militaris Coffee



COFFEE POWDER



HIGH QUALITY MILK POWDER



CORDYCEPS



Enjoy the Cordyceps Benefits



LONGRICH
Cordyceps
Militaris Coffee



The Effects and Functions:

Modern medical science demonstrates that Cordyceps Militaris is nutritious and has special medical value especially coming from Cordyceps Acid, Cordycepin and Cordyceps polysaccharide. Superb raw materials and ingredients make great products: all raw materials come from Indonesia. Mellow to the last drop: 40 years of expertise and research guarantees the high quality.

Secret Ingredients keep you healthy:

Cordyceps Militaris included in every sachet of Longrich Cordyceps Militaris Coffee.

Suggested Use:

Pour one stick of coffee into cup, add 150ml of hot water, stir well and serve.

Storage:

Store in a cool, dry place.

Ingredients: NON-DAIRY CREAMER (GLUCOSE SYRUP, PALM KERNEL OIL, SODIUM CASEINATE, STABILIZER (E340, E452I), EMULSIFIER (E741, E472E), ANTI-CAKING AGENT (E551, E554), SUGAR, INSTANT COFFEE, CORDYCEPS MILITARIS.



CORDYCEPS MILITARIS & BLACK GINGER

ENERGY BLEND TABLETS



LONGRICH CORDYCEPS MILITARIS & BLACK GINGER ENERGY BLEND TABLETS



Enhance Your Battle Like a Tiger!

It is not just black ginger! We have a more scientific, nutritious and efficient gold formula.

CORDYCEPIN

It can inhibit bacteria, prevent virus, regulate endocrine and enhance immune function.

BLACK GINGER

In Japan it's called turmeric. It was called the Krachai Dam in the country of origin. It has been known for 1,000 years for its energizing, strengthening and nourishing properties.

Suggested Use:

Chew or take 2 tablets once daily.

Inappropriate For:

Babies, toddlers, children and people allergic to edible fungi.

Storage:

Place in a cool, dry place. Keep away from direct sunlight and heat. Keep in bottle.

Ingredients: SORBITOL, BLACK GINGER POWDER, CORDYCEPS MILITARIS EXTRACT, ZAOUCYS DHUMNADES POWDER, MAGNESIUM STEARATE.



LONGRICH

Black Tea & Tremella Drink Mix



□ Inhibit FSP27

□ Activate AMPK



LONGRICH BLACK TEA & TREMELLA Drink Mix



Health Benefits:

- White fat cells become brown fat cells because they are easier to break down.
- Inhibit FSP27, effectively inhibit fat droplets, not easy to get fat again.
- Activate AMPK, which promotes fat burning.

DARK TEA

Lower blood lipids, regulate fat metabolism and promote digestion.

TREMELLA

Acid isopolysaccharide is the active substance to reduce fat and lose weight.

Suggested Use:

Pour 1 sachet in cup, add in 200-300ml hot water, stir well and serve.

Storage:

Place in a cool, dry place. Keep away from direct sunlight and heat.

Ingredients: INSTANT BLACK TEA POWDER,
TREMELLA EXTRACTS.

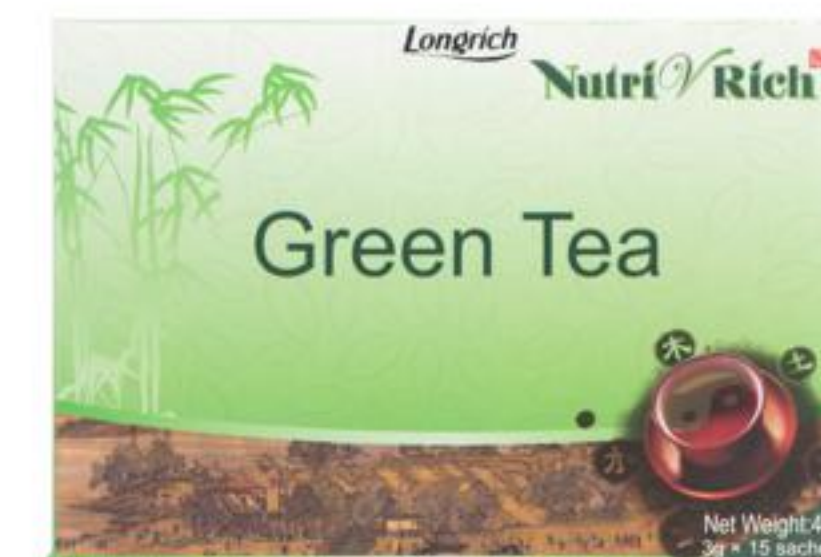




NutriVRich



LONGRICH *NutriVRich* GREEN TEA



Just one cup a day with a relax intestinal

Fresh green tea wit Chinese yam rhizome,semen raphani, poria cocos and cassia seed ,it facilitated intestinal peristalsis and promote digest ,is indispensable when you are in busy work ,no side effect to human body and other adverse reactions.

Directions for Use:

Take 1-2 bags per day. Brew with boiled water and it can be re-infused for several times.

Storage:

Seal and store in a cool dry place.

Ingredients: SEMEN PRUNI, SEMEN CASSIAE, PORIA COCOS, SEMEN RAPHANI, GREEN TEA





LONGRICH *NutriVRich* PINK TEA



Just one one cup a day for a perfect figure

Fresh green tea with lotus leaf , poria, hawthorn, cassia seed, chrysanthemum; adjusts the body's yin and yang balance, eliminates excess energy absorption , provides full mobilization of the human digestive system and water metabolism in normal circulation physiology, create your perfect figure!

Not suitable for:

Pregnant or nursing women, and person of normal weight.

Directions for Use:

Take 1 bag per day. Brew with boiled water and it can be re-infused for several times.

Storage:

Seal and store in a cool dry place.

Ingredients: GREEN TEA, LOTUS LEAF, PORIA
COCOS, SEMEN CASSIAE, CHRYSANTHEMUM



LONGRICH *NutriVRich* BROWN TEA



Just one cup a day for comprehensive regulate lipid metabolism

Longrich NutriVRich Brown Tea is hawthorn based, with aloe vera gel, supplemented by green Tea, preventing pathogenic fire in addition to drying, protecting the liver and improving eyesight, promoting diuresis. Both act as a fire-dispelling laxative, but also reduce liver fire, while promoting fat digestion. Lipid-lowering, anti-atherosclerotic, anti-platelet aggregation effect, besides, it reduced body fat secondary absorption, effectively prevent excess heat. The side compatibility scientific and rational, comprehensive regulation of human lipid metabolism physiology, which plays lower cholesterol, triglycerides and other comprehensive lipid-lowering effect.

Suggested Use:

Take 2 bags per day. Brew with boiled water and it can be re-infused for several times.

Storage:

Seal and store in a cool dry place.

Ingredients: GREEN TEA, SEMEN CASSIAE,
POLYGHACE SECHE





PRODUCT PRESENTATION

Personal Cleanliness

Soap & Shampoo
& Bodywash





Natural Essence

White Tea Nourishing Soap



LONGRICH
Natural Essence
White Tea
Nourishing Soap



Multi-purpose For Face And Body Cleansing

Mild formula contains white tea extracts. Provides fresh care for skin; Cleanses, brightens, refreshes and moisturizes, all in one.

Moisturizing formula makes skin look smooth and supple.

Directions for use:

Ideal for use on face and body every day.

Storage:

Sore in a cool, dry place. Avoid direct sunlight.

Ingredients: GLYCERIN, SUCROSE, WATER (AQUA) , ALCOHOL, PALMITIC ACID, LAURIC ACID, SORBITOL, SODIUM LAURETH SULFATE, STEARIC ACID, SODIUM HYDROXIDE, PARFUM, CAMELLIA SINENSIS LEAF EXTRACT, LACTIC ACID, SODIUM BENZOATE, POTASSIUM SORBATE, YELLOW 5(CI 19140), GREEN 3(CI 42053), BLUE 1(CI 42090)





Natural Essence

Bamboo Charcoal Soap



LONGRICH
Natural Essence
Bamboo
Charcoal Soap



Contains refined bamboo charcoal extracts, effectively cleanses dirt, grime and excessive skin grease from skin, leaving skin feeling clean and fresh. Moisturizes, protects and softens skin, keeps skin clean and healthy. Mild formula ideal for oily or combination skin. Recommended for daily use.

Efficacies:

It cleanses and nourishes your skin, removes oil and dirt, also helps your skin stay fresh longer.

Effects:

Leaving the skin fresh and smooth after using the soap

Usage:

Mild, suitable for combination and oily skin. Recommended for daily use.

Storage:

Store in a cool, dry place. Avoid direct sunlight.

Ingredients: GLYCERIN, SUCROSE, WATER, ALCOHOL, PALMITIC ACID, LAURIC ACID, SORBITOL, SODIUM LAURETH SULFATE, STEARIC ACID, SODIUM HYDROXIDE, PARFUM, BAMBOO CHARCOAL



Longrich

Natural Essence

White Tea Dandruff Control Shampoo



LONGRICH *Natural Essence* **White Tea** Dandruff Control **SHAMPOO**

Active formula cleanses and removes dandruffs thoroughly; restores moisture balance to hair and scalp; hair looks clean, soft and shiny.

White tea polyphenol, a powerful anti-oxidant, helps protect and refresh hair effectively.

Directions:

Apply on damp hair, massage hair and scalp gently, rinse thoroughly.

Caution:

Do not swallow. Avoid contact with eyes. Keep out of reach of children.

Storage:

Sto**r**e in a cool, dry place. Avoid direct sunlight.

Ingredients: WATER, AMMONIUM LAURETH SULFATE, AMMONIUM LAURYL SULFATE, GLYCOL DISTEARATE, CAMELLIA SINENSIS LEAF EXTRACT, MENTHOL, ZINC PYRITHIONE, GLYCERIN, GUAR HYDROXYPROPYLTRIMONIUM CHLORIDE, CETYL ALCOHOL, DIMETHICONE, POLYQUATERNIUM-10, MAGNESIUM CHLORIDE, SODIUM CHLORIDE, ZINC CHLORIDE, MAGNESIUM NITRATE, COCAMIDE MEA, CITRIC ACID, SODIUM CITRATE, LACTIC ACID, PARFUM, BENZYL ALCOHOL, SODIUM BENZOATE, METHYLCHLOROISOTHIAZOLINONE, METHYLISOTHIAZOLINONE, POTASSIUM SORBATE, YELLOW 5(CI 19140), BLUE 1(CI 42090)



BRIGHTENING CONDITIONER

BRIGHTENING AND MOISTURIZING



LONGRICH
*BRIGHTENING
CONDITIONER*
*Brightening
& Moisturizing*



Contains red pomegranate essence and EMP protein to protect your hair by locking color, make hair brightening and softening.

Intensive nourishing makes hair strong and elastic, make your hair have tactility of elegant and smooth, and regain the enchanting hair.

Suitable For:

All types of hair, including color treated hair.

Directions:

Apply appropriate amount of conditioner on dampened hair, massage gently for a while, and then rinse with clean water.

Caution:

Avoid contact with your eyes, if comes into contact with your eyes, please flush with plenty water immediately and consult a doctor. Please keep out of reach of children.

Storage:

Store in a cool, dry place. Avoid direct sunlight.

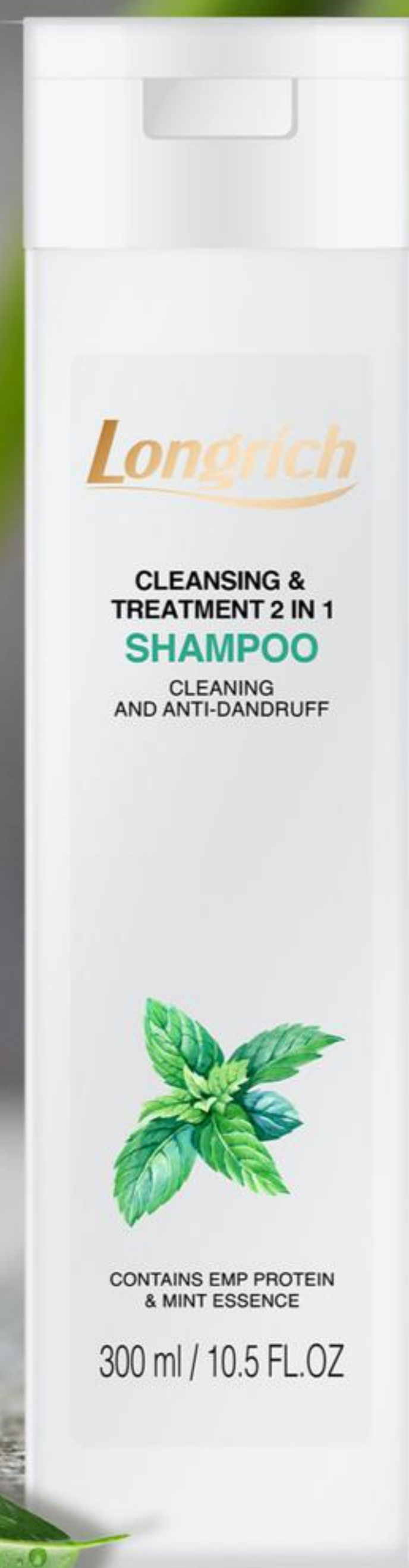
Ingredients: AQUA, CETEARYL ALCOHOL, BEHENTRIMONIUM METHOSULFATE, ISOPROPYL ALCOHOL, DIMETHICONE, PROPYLENE GLYCOL, HYDROLYZED EGG SHELL MEMBRANE, PUNICA GRANATUM FRUIT EXTRACT, PARFUM, METHYL PARABEN, PROPYL PARABEN.



Longrich

CLEANSING & TREATMENT 2 IN 1 SHAMPOO

CLEANING & ANTI-DANDRUFF



LONGRICH CLEANSING & TREATMENT 2 IN 1 SHAMPOO CLEANING & ANTI-DANDRUFF

Formulated with hair-loving EMP & ZPT complexes and peppermint extracts, this product provides tender loving care for your hair and scalp. It cleanses and soothes your scalp, removes dandruff, dirt and excess grease from hair, leaving your hair looking smooth, soft, healthy and glossy.

Suitable For:

All types of hair, including color treated hair.

Directions:

Apply to damp hair, massage your scalp and hair for 3 or 5 minutes, and rinse thoroughly.

Caution:

Avoid contact with eyes. If contact occurs, flush with plenty of water immediately and consult a doctor if need be. Keep out of reach of children.

Storage:

Store in a cool, dry place. Avoid direct sunlight.

Ingredients: WATER, AMMONIUM LAURETH SULFATE, AMMONIUM LAURYL SULFATE, COCAMIDE MEA, DIMETHICONE, GLYCOL DISTEARATE, MENTHOL, HYDROLYZED EGG SHELL MEMBRANE, ZINC PYRITHIONE, GUAR HYDROXYPROPYLTRIMONIUM CHLORIDE, CETYL ALCOHOL, MAGNESIUM SULFATE, MAGNESIUM CHLORIDE, SODIUM CHLORIDE, ZINC CHLORIDE, MAGNESIUM NITRATE, HYDROCHLORIC ACID, PARFUM, BENZYL ALCOHOL, SODIUM BENZOATE, METHYLCHLOROISOTHIAZOLINONE, METHYLISOTHIAZOLINONE, YELLOW 5(CI 19140), BLUE 1(CI 42090)



Longrich

HERBAL MOISTURIZING BODY WASH

CLEANS / REFRESHES
MOISTURIZES AND SMOOTHES



300ml / 10.5 FL.OZ.

LONGRICH HERBAL MOISTURIZING BODY WASH

CLEANS & REFRESHES
MOISTURIZES & SMOOTHES



Formulated with menthol, vitamins and varied extracts obtained from green tea, aloe vera, Longrich Herbal Moisturizing Body Wash cleans, refreshes, moisturizes and softens your skin with elegant herbal scent, leaving your skin feeling ultra clean, smooth, soft, soothed, relaxed and refreshed. Soap-free formula.

Directions:

Apply to entire body with hands or shower sponge, gently massage, rinse thoroughly.

Caution:

Avoid contact with eyes. If contact occurs, flush with plenty of water immediately and seek medical attention if need be. Keep out of reach of children.

Storage:

Store in a cool, dry place. Avoid direct sunlight.

Ingredients: WATER, SODIUM LAUROYL SARCOSINATE, LAURL HYDROXYSULTAIN, DECYL GLUCOSIDE, ACRYLATES COPOLYMER, TEA-LAUROYL COLLAGEN AMINO ACIDS, CAMELLIA SINENSIS LEAF EXTRACT, ALOE BARBADENSIS LEAF JUICE, MENTHOL, PANTHENOL, TOCOPHERYL ACETATE, CARBOXYMETHYL CHITOSAN, LINOLEAMIDE DEA, PEG-120 METHYL GLUCOSE DIOLEATE, GLYCERYL OLEATE, SODIUM CHLORIDE, MALTODEXTRIN, COCAMIDE MEA, ETHYLHEXYLGLYCERIN, ISOSTEARAMIDE DEA, TETRASODIUM EDTA, POTASSIUM HYDROXIDE, PARFUM, PHENOXYETHANOL, SODIUM PROPYLPARABEN, SODIUM METHYLPARABEN, YELLOW 5(CI 19140), BLUE 1(CI 42090)



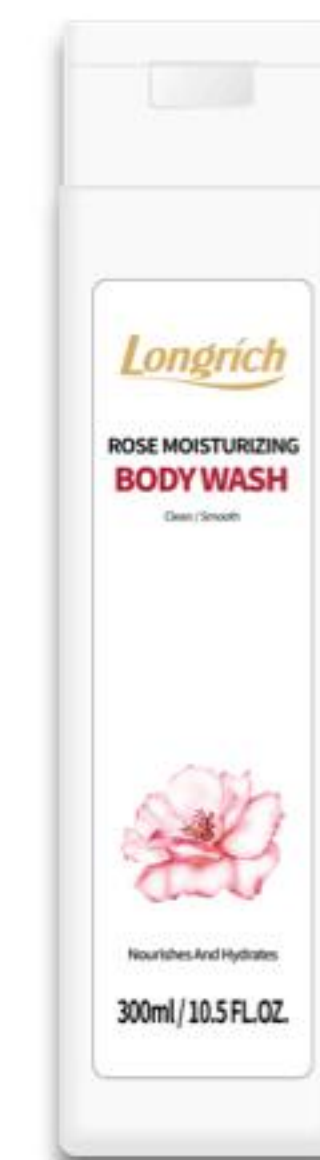
Longrich

ROSE MOISTURIZING BODY WASH

Clean / Smooth



Nourishes And Hydrates
300ml / 10.5 FL.OZ.



LONGRICH ROSE MOISTURIZING BODY WASH CLEAN & SMOOTH NOURISHES & HYDRATES

Formulated with shea butter extracts, rose essential oil, oat peptides and a unique blend of plant extracts, this product cleanses, moisturizes and firms your skin with alluring rosy scent.

Directions:

Apply evenly to wet skin, lather well, massage gently, rinse thoroughly.

Caution:

Avoid contact with eyes. If contact occurs, flush with plenty of water. If irritation occurs, consult a doctor. Keep out of reach of children.

Storage:

Store in a cool, dry place. Avoid direct sunlight.

Ingredients: WATER, SODIUM LAUROYL SARCOSINATE, LAURL HYDROXSULTAINE, DECYL GLUCOSIDE, TEA-LAUROYL COLLAGEN AMINO ACIDS, BUTYROSPERMUM PARKII (SHEA BUTTER), ROSA DAMASCENA FLOWER OIL, PELARGONIUM GRAVEOLENS OIL, AVENA SATIVA (OAT) PEPTIDE, CARBOXYMETHYL CHITOSAN, BETAINE, LINOLEAMIDE DEA, PEG-120 METHYL GLUCOSE DIOLEATE, STYRENE/ACRYLATES COPOLYMER, GLYCERYL OLEATE, SODIUM CHLORIDE, COCAMIDE MEA, ISOSTEARAMIDE DEA, TETRASODIUM EDTA, PARFUM, BENZOIC ACID, SODIUM BENZOATE, SODIUM METHYLPARABEN, SODIUM PROPYLPARABEN, RED 40 (CI 16035) , RED 33 (CI 17200)



INSTANT HAND SANITIZER

75%

Ethyl Alcohol

1 min

**Non-Wash
Quick-Dry**

99.9%

Effective Sterilization



**LONGRICH
INSTANT
HAND SANITIZER**

Non-wash and quick-dry: Portable and convenient, no need to wash, clean your hands anytime and anywhere.

Microorganisms to be exterminated:

Staphylococcus aureus, escherichia coli, candida albicans.

Directions for use:

Take appropriate amount (2 ml-3ml) to the palm of your hands, and massage your hands for one minute, no need to wash, it will dry naturally.

Scope of application:

This product is suitable for hand disinfection, non-water washing and easy to use.

Caution:

1. This product is a disinfectant for external use and shall not be taken orally, please keep out of reach of children.
2. Avoid use with antagonistic drugs.
3. Use this product with caution if allergic.
4. Keep in a dark, dry and cool place, and keep sealed.
5. Flammable, keep away from fire.
6. The duration of use shall not exceed 30 days after opening.

Ingredients: MAIN ACTIVE INGREDIENT AND
CONTENT: 70%±5% (V/V) ETHYL ALCOHOL





PRODUCT PRESENTATION

Cosmetics

Cream & Perfume
& Lipstick & Make-up



EVERGREEN POLAR BRIGHT SERIES

BRIGHTENING & MOISTURIZING



POLAR BRIGHT
SERIES
EVERGREEN

**EVERGREEN
POLAR BRIGHT
SERIES**



By leveraging the latest skin technology, the scientists of Longrich Research Institute obtains a multitude of skin rejuvenating complex that helps cleanse, condition, nourish and protect your skin intensively, leaving your skin looking crystal clear, breathtakingly bright and ultra radiant from within.

Main Ingredients & Benefits:

VC Glucoside: a nanotechnology-based, highly penetrative antioxidant with greater stability when exposed to light, heat and oxidation; Helps maintain skin elasticity, repairs UV-induced skin damage, reduces dullness and keeps skin healthy.

Skin Rejuvenating Complex: a remarkable antioxidant that keeps skin clear and translucent.

Glucosamine: evens out skin tone, brightens complexion from within.

Active Infusion Technology: infuses active ingredients into the inner layer of the skin for best absorption results.

Warnings:

1. Do not use these products if your skin is experiencing medical conditions e.g. injuries, swellings, rashes, ulcers, etc.
2. Please discontinue use if redness, swellings, itching or discomfort occurs during use or after skin exposure to sunlight. If any of these symptoms worsen, please consult dermatologist.

Cautions:

1. Ensure your hands are clean before use.
2. Do not return the remnant into the bottle.
3. Close the bottle cap tightly after use.
4. Keep it out of the reach of children.
5. Do not expose it to extremely high and low temperatures and avoid direct sunlight.
6. Avoid contact with eyes. If getting into eyes, flush with plenty of water. If irritation or inflammation persists, consult an ophthalmologist immediately.



Miracle Encounter
EAU DE TOILETTE



LONGRICH
Miracle Encounter
EAU DE TOILETTE



The feminine, intoxicating floral accord imparts voluptuous allure in delicate balance and sensual aroma, infusing each chance meeting with stunning romance.

Top Notes: Essential Oil of Ylang-Ylang from Comoro Islands;

Middle Notes: Damascus Rose Essential Oil;

Base Notes: Pure Scent of Jasminum Sambac.

How to use:

Apply to the inside of wrists or behind earlobes.

Caution:

Store in a cool, dry area away from children. If irritations occur, discontinue use.

Ingredients: ALCOHOL, PARFUM, WATER (AQUA), PROPYLENE GLYCOL, DIPROPYLENE GLYCOL, PEG-40 HYDROGENATED CASTOR OIL, BUTYL METHOXYDIBENZOYLMETHANE, BHT, TRIDECETH-9, OCTOCRYLENE, ETHYLHEXYL SALICYLATE, ALPHA-ISOMETHYL IONONE, BENZYL SALICYLATE, BUTYLPHENYL METHYLPROPIONAL, CITRONELLOL, GERANIOL, HEXYL CINNAMAL, HYDROXYCITRONELLAL, LIMONENE, LINALOOL, CI 14700, CI 17200





Passion Encounter

EAU DE TOILETTE



LONGRICH
Passion Encounter
EAU DE TOILETTE



Specially formulated for exuberant masculinity and clean freshness. The light scent is released little by little, exuding sunny vibrant glamour. Oriental woody signature imparts ultra fresh aroma, evoking overpowering sensual bliss.

Top Notes: Tea Aroma, Tobacco;

Middle Notes: Rose, Ebony;

Base Notes: Patchouli, Woody Aroma, Leather.

How to use:

Apply to the inside of wrists or behind earlobes.

Caution:

Sore in a cool, dry area away from children. If irritations occur, discontinue use.

Ingredients: ALCOHOL, PARFUM, WATER (AQUA), PROPYLENE GLYCOL, DIPROPYLENE GLYCOL, PEG-40 HYDROGENATED CASTOR OIL, BUTYL METHOXYDIBENZOYLMETHANE, BHT, TRIDECETH-9, OCTOCRYLENE, ETHYLHEXYL SALICYLATE, CITRAL, CITRONELLOL, COUMARIN, EVERNIA PRUNASTRI (OAKMOSS) EXTRACT, HYDROXYCITRONELLAL, LIMONENE, LINALOOL



ANTI-MOSQUITO SPRAY

DEET (5%) Highly Effective for 8 Hours



LONGRICH Mosquito Repellent *Flower & Fruit Fragrance*



Formulated with snake gallbladder extract, DEET and natural scent complex, helps repel mosquitoes effectively, refreshes and invigorates skin, leaves behind citric scent as top note, floral scent as heart note and musk as base note.

Caution:

Keep out of reach of children. Do not use it on eye area or skin areas that are damaged or suffering from dermatitis, or in close vicinity of silkworm nursery. Do not swallow. Cautious use is advised for allergic people. If any irritations occur, please seek medical advice immediately. As the formula contains snake gallbladder extract, some safe sediment may be found at the bottom of the container.

Storage:

Place it in cool, dry area away from direct sunlight. Keep out of reach of children. Do not trample on it. Do not put it close to food, beverage, seeds, grains, fodder, inflammables and explosives, etc.

Toxicity & First Aid

Slightly toxic. If getting into eyes, flush with plenty of water. If irritation persists, seek medical attention. If swallowed, drink plenty of water and go to hospital. If sensitivity occurs, discontinue use immediately.

Directions:

Directly apply to skin to protect against mosquitoes.

Ingredients: ALCOHOL, AQUA, DIETHYL TOLUAMIDE, PARFUM, BENZOPHENONE-4, TRIETHANOLAMINE, SNAKE (SERPENTES SPP.) GALL EXTRACT, CI 42090



Extra Moisture Lip Balm
Nourishing Hydrating Repairing

White
Chocolate

Extra Moisture Lip Balm

LONGRICH
Extra Moisture
LIP BALM
White Chocolate



Infused with vitamin E to richly moisturize lips, smooth fine lines on lips, and lock in moisture, this lip balm makes your lips soft, luxurious, lustrous and your smiles charming, radiant and confident.

Directions:

Use after basic skincare routine. Twist out some 1 centimeter of stick, apply to lips directly or with the aid of lip brush. To avoid breaking it, don't twist out too long balm stick.

Caution:

Place it in a cool, dry area away from direct sunlight. Keep out of reach of children. Don't ingest. Cautious use is advised for sensitive skin. Discontinue use immediately if irritation occurs.

Note The ingredient marked with an asterisk is Vitamin E.

Ingredients: CAPRYLIC/CAPRIC TRIGLYCERIDE, POLYBUTENE, TRIDECYL TRIMELLITATE, OLEA EUROPAEA (OLIVE) FRUIT OIL, POLYETHYLENE, BEESWAX, OZOKERITE, SQUALANE, CANDELILLA CERA, POLYHYDROXYSTEARIC ACID, BUTYROSPERMUM PARKII (SHEA BUTTER), TOCOPHERYL ACETATE*, PARFUM

LONGRICH

Extra Moisture Lip Balm

Nourishing Hydrating Repairing

Brown
Chocolate

LONGRICH

Extra Moisture
LIP BALM
Brown Chotolate



Infused with vitamin E to richly moisturize lips, smooth fine lines on lips, and lock in moisture, this lip balm makes your lips soft, luxurious, lustrous and your smiles charming, radiant and confident.

Directions:

Use after basic skincare routine. Twist out some 1 centimeter of stick, apply to lips directly or with the aid of lip brush. To avoid breaking it, don't twist out too long balm stick.

Caution:

Place it in a cool, dry area away from direct sunlight. Keep out of reach of children. Don't ingest. Cautious use is advised for sensitive skin. Discontinue use immediately if irritation occurs.

Note The ingredient marked with an asterisk is Vitamin E.

Ingredients: CAPRYLIC/CAPRIC TRIGLYCERIDE, POLYBUTENE, TRIDECYL TRIMELLITATE, OLEA EUROPAEA (OLIVE) FRUIT OIL, POLYETHYLENE, BEESWAX, OZOKERITE, SQUALANE, CANDELILLA CERA, POLYHYDROXYSTEARIC ACID, BUTYROSPERMUM PARKII (SHEA BUTTER), TOCOPHERYL ACETATE*, TRIETHOXYCAPRYLYLSILANE, PARFUM, CI 77491, CI 77499





ENTRE NOUS
FOUR SEASONS OF
GLAMOUR



ENTRE NOUS FOUR SEASONS OF GLAMOUR

Blush:

- Come in four shades, redefine sculpted facial contour;
- Fine, soft, powdered texture, long-lasting wear, leaving skin feeling velvety smooth;
- Lightweight, mild formula provides clear, fresh wear of makeup.

Ingredients: talc, mica, silica, dimethicone, zinc stearate, aluminum starch octenylsuccinate, pentaerythrityl tetraoisostearate, octyldodecyl stearoyl stearate, boron nitride, phenoxyethanol, caprylyl glycol, ethylhexylglycerin, methylparaben, tin oxide

Eye Shadow:

- Elegant color helps create glowing, luminous smoky eye makeup easily;
- Exquisite powder texture colors up easily with strong adhesion; long-lasting wear, smudging-proof;
- 16 shades of eye shadow readily meet your various color needs for both work and life.

①**ingredients:** talc, mica, calcium aluminum borosilicate, pentaerythrityl tetraoisostearate, diisostearyl malate, zinc stearate, silica, aluminum starch octenylsuccinate, triethoxycaprylylsilane, phenoxyethanol, caprylyl glycol, ethylhexylglycerin, methylparaben, tin oxide ②**ingredients:** talc, mica, pentaerythrityl tetraoisostearate, diisostearyl malate, silica, zinc stearate, calcium aluminum borosilicate, aluminum starch octenylsuccinate, triethoxycaprylylsilane, synthetic fluorphlogopite, phenoxyethanol, caprylyl glycol, ethylhexylglycerin, methylparaben, tin ③**ingredients:** talc, mica, diisostearyl malate, pentaerythrityl tetraoisostearate, synthetic fluorphlogopite, zinc stearate, silica, aluminum starch octenylsuccinate, triethoxycaprylylsilane, phenoxyethanol, caprylyl glycol, ethylhexylglycerin, methylparaben, tin oxide ④**ingredients:** talc, mica, silica, zinc stearate, aluminum starch octenylsuccinate, dimethicone, pentaerythrityl tetraoisostearate, octyldodecyl stearoyl stearate, boron nitride, phenoxyethanol, caprylyl glycol, ethylhexylglycerin, methylparaben ⑤**ingredients:** talc, mica, pentaerythrityl tetraoisostearate, diisostearyl malate, zinc stearate, silica, aluminum starch octenylsuccinate, triethoxycaprylylsilane, phenoxyethanol, caprylyl glycol, ethylhexylglycerin, methylparaben, tin oxide ⑥**ingredients:** talc, mica, boron nitride, polymethylsilsesquioxane, zinc stearate, aluminum starch octenylsuccinate, silica, dimethicone, isononyl isononanoate, octyldodecyl stearoyl stearate, triethoxycaprylylsilane, phenoxyethanol, caprylyl glycol, ethylhexylglycerin, bht, methylparaben

Lip Gloss

- natural, clear color provides boosted moisture and glow for your lips;
- lightweight texture; non-sticky;
- hydrating formula provides ultra comfort and sensuality.

ingredients: polyisobutene, caprylic/capric triglyceride, silica dimethyl silylate, disteardimonium hectorite, melaleuca alternifolia (tea tree) leaf oil, ethylhexyl palmitate, ophiopogon japonicus root extract, panax notoginseng root extract, carthamus tinctorius (safflower) flower extract, glycyrrhiza uralensis (licorice) root extract, mica, synthetic fluorphlogopite, propylene carbonate, pentaerythrityl tetra-di-t-butyl hydroxyhydrocinnamate, tin oxide, bht, ricinus communis (castor) seed oil, sodium hyaluronate, hydrogenated castor oil

Mascara:

- unique brush head makes eyelashes become more manageable;
- eyelashes look more slender, curly and defined with long-lasting wear;
- eyes look luminous, glowing and charming.

ingredients: aqua, styrene/acrylates copolymer, stearic acid, paraffin, copernicia cerifera (carnauba) wax, microcrystalline wax, pvp, polyisobutene, hydrogenated c12-18 triglycerides, butylene glycol, cera alba, ammonium acrylates copolymer, glyceryl stearate, peg-100 stearate, triethanolamine, vp/eicosene copolymer, sorbitan sesquiolate, phenoxyethanol, hydroxyethylcellulose, sucrose stearate, potassium sorbate, sodium dehydroacetate



PRODUCT PRESENTATION

ARTEMISIA

Toothpaste & Mouthwash
& Shampoo & Body wash
& Hand Soap & Soap
& Deodorant & Detergent



MEDICINAL HERBS ILLUSTRATION

qīng hāo
青 蒿
Artemisia annua

Tu youyou, the Chinese scientist who discovered artemisinin, won the 2015 Nobel Prize in medicine.



Artemisinin has a strong oxidation ability, which can Pierce the cell membrane of bacteria and interfere with its activity, preventing the metabolism of bacteria from causing rapid death, thus killing mites.

Artemisin Series Products Treatment Cycle



Reality exhibit after uses, the effect is visible



BEFORE

Itchy skin
Dermatitis attack



DURING USE

Alleviate the symptoms
Weaken the inflammation



AFTER

Protect skin
Repair the damage

「The actual effect may be different depending on the degree of dermatitis and skin absorption」



ARTEMISIN SERIES



RICH FOAM



NO PIGMENT
ADDED



WHOLE BODY
APPLICABLE



HIGH-GRADE
PACKAGING



ARTEMISIN SERIES

ARTEMISIN

Multi-Effect Total Protection Toothpaste



ARTEMISIA

Multi-Effect Total Protection
TOOTHPASTE



Contains selected artemisia annua extracts, tastes cool and fresh, reduces internal heat and oral inflammation effectively, protects teeth and gums, and improves oral health.

·Delivers multi-action care·Eliminates oral inflammation·Reduces tooth stains·Freshens breath·Protects gums·Provides cool fresh flavor·Reduce plaque·

Multi-Action Artemisia Annua

According to Chinese herbology volume The Holy Husbandman's Classic on Roots and Herbs, the artemisia annua is remarkably effective in reducing internal heat and fever, alleviating sunstroke and treating malaria.

Specially formulated with artemisia annua extract and fortified with tooth protection complex, the Artemisin Toothpaste Series help effectively reduce oral inflammation, gingivitis, gum bleeding and swelling, etc, improve oral health and freshen breath.

Directions:

Squeeze it on toothbrush, brush teeth for 2-3 minutes, rinse mouth out. Do not swallow.

Caution:

Children under the age of 6 should only use a pea-sized amount each time under adult supervision.

Ingredients: SORBITOL, WATER, HYDRATED SILICA, PEG-8, SODIUM LAURYL SULFATE, PARFUM, SODIUM FLUORIDE (1300PPM AS FLUORINE), ZINGIBER OFFICINALE (GINGER) ROOT EXTRACT, ARTEMISIA ANNUA EXTRACT, BISABOLOL, XYLITOL, TRANEXAMIC ACID, SODIUM SACCHARIN, CELLULOSE GUM, MICA, TITANIUM DIOXIDE, ETHYLHEXYLGLYCERIN, PHENOXYETHANOL, CI 19140, CI 42090



ARTEMISIN

MULTI-ACTION TOTAL CARE MOUTHWASH
● CLEANSSES MOUTH & FRESHENS BREATH



ARTEMISIA

Multi-Action Total Care

MOUTHWASH

Cleanses Mouth & Freshens Breath



Formulated with artemisia annua extracts, this Multi-Action Mouthwash provides total protection for your best oral health.

Hypoallergenic, mild-textured formula carefully cleanses mouth of food debris and soft mucinous deposits, freshens breath, improves oral hygiene, protects gums, reduces plaque and brightens teeth.

Directions:

Use 20ml every AM and PM after meals, gargle for 30 seconds and spit it out; Rinse-free; For best results, rinse mouth with clean water before use.

Caution:

Do not swallow. Children under age of 12 should not use this product.

Storage:

Place in a cool, dry area.

Ingredients: WATER, SORBITOL, ALCOHOL, XYLITOL, POLOXAMER 407, SODIUM FLUORIDE (220PPM AS FLUORIDE) , ARTEMISIA ANNUA EXTRACT, CAMELLIA SINENSIS POLYPHENOLS, SODIUM SACCHARIN, CETYLPYRIDINIUM CHLORIDE, ETHYLHEXYLGLYCERIN, CITRIC ACID, PARFUM, SODIUM BENZOATE, PHENOXYETHANOL, CI 19140, CI 42090



ARTEMISIA

NOURISHING REPAIR SHAMPOO



Contains Plant Extracts.
Nourishes, Volumizes, Glistens



ARTEMISIA

Nourishing Repair

SHAMPOO



Contains artemisia annua extracts, replenishes nutrients and moisture, cleanses scalp, repairs damaged hair, controls sebum, creates optimal environment for hair to grow and breathe. Hair looks volumized and lustrous. Light, elegant scent gives added charm and regained confidence.

Directions:

Apply on wet hair, gently massage for a while, rinse off. Repeat for better results.

Caution:

Avoid contact with eyes. If getting into eyes, flush with clean water thoroughly.

Storage:

Store in a cool, dry place. Avoid direct sunlight.

Ingredients: WATER, AMMONIUM LAURETH SULFATE, AMMONIUM LAURYL SULFATE, ARTEMISIA ANNUA EXTRACT, SODIUM HYALURONATE, PPG-3 CAPRYLYL ETHER, SODIUM LAUROAMPHOACETATE, PPG-2 HYDROXYETHYL COCO/ISOSTEARAMIDE, COCAMIDOPROPYL BETAINE, SODIUM CHLORIDE, GUAR HYDROXYPROPYLTRIMONIUM CHLORIDE, PROPYLENE GLYCOL, GLYCERIN, 1,2-HEXANEDIOL, POLYQUATERNIUM-10, MAGNESIUM CHLORIDE, MAGNESIUM NITRATE, ETHYLHEXYLGLYCERIN, DISODIUM EDTA, CITRIC ACID, PARFUM, SODIUM BENZOATE, METHYLCHLOROISOTHIAZOLINONE, METHYLISOTHIAZOLINONE, PHENOXYETHANOL



ARTEMISIA

NOURISHING REPAIR CONDITIONER



Silky Smooth & Ultra Elastic



ARTEMISIA

Nourishing Repair

CONDITIONER

Silky Smooth & Ultra Elastic



Contains artemisia annua extracts, nourishes hair intensively, rescues damaged hair from roughness, dryness, dullness, fragility and tangling that are caused by chemical/color treatment, ultraviolet radiation and loss of nutrients, leaving hair feeling ultra elastic, silky smooth and velvety soft.

Directions:

Towel-dry after hair wash, apply evenly on damp hair, gently massage for 1-2 minutes, rinse off.

Caution:

Keep out of reach of children. Do not swallow. Avoid contact with eyes. If getting into eyes, flush with plenty of water thoroughly. If irritations occur, please discontinue use immediately.

Storage:

Store in a cool, dry place. Avoid direct sunlight.

Ingredients: WATER, CETEARYL ALCOHOL, DIMETHICONE, PARFUM, BEHENTRIMONIUM METHOSULFATE, PROPYLENE GLYCOL, ARTEMISIA ANNUA EXTRACT, PUNICA GRANATUM FRUIT EXTRACT, HYDROLYZED EGG SHELL MEMBRANE, ISOPROPYL ALCOHOL, 1,2-HEXANEDIOL, BUTYLENE GLYCOL, METHYLPARABEN, PROPYLPARABEN, PHENOXYETHANOL



ARTEMISIN

VIBRANT SOOTHING BODY WASH

Contains Plant Extracts
Nourishes, Moisturizes, Activates



ARTEMISIA *Vibrant Soothing* BODY WASH



Contains artemisia annua extracts with remarkable skin affinity, refreshes and awakens skin vitality; Relishes the shower pleasure in rich, creamy and fresh-scented lathers. Skin looks lustrous and feels energized and refreshed.

Directions:

Apply on wet body with hands or sponge, gently rub, rinse off.

Caution:

Place it in cool dry area. Keep out of reach of children. Do not swallow. Discontinue use if any irritations occur.

Storage:

Store in a cool, dry place. Avoid direct sunlight.

Ingredients: WATER, SODIUM LAURETH SULFATE, COCAMIDE DEA, SODIUM CHLORIDE, COCAMIDOPROPYL BETAINE, ARTEMISIA ANNUA EXTRACT, GLYCERIN, PROPYLENE GLYCOL, MAGNESIUM CHLORIDE, MAGNESIUM NITRATE, 1,2-HEXANEDIOL, CITRIC ACID, PARFUM, METHYLCHLOROISOTHIAZOLINONE, METHYLISOTHIAZOLINONE



ARTEMISIA

INSTANT HAND SANITIZER

STATE: **LIQUID**



ARTEMISIA *INSTANT* HAND SANITIZER



Formulated with artemisia annua extracts. Keep your hands clean while avoiding other viruses.

Non-wash and quick-dry: Portable and convenient, no need to wash, clean your hands anytime and anywhere.

Microorganisms to be exterminated:

Staphylococcus aureus, escherichia coli, candida albicans.

Directions for use:

Take appropriate amount (2 ml-3ml) to the palm of your hands, and massage your hands for one minute, no need to wash, it will dry naturally.

Scope of application:

This product is suitable for hand disinfection, non-water washing and easy to use.

Caution:

1. This product is a disinfectant for external use and shall not be taken orally, please keep out of reach of children.
2. Avoid use with antagonistic drugs.
3. Use this product with caution if allergic.
4. Keep in a dark, dry and cool place, and keep sealed.
5. Flammable, keep away from fire.
6. The duration of use shall not exceed 30 days after opening.

Main active ingredient and content: 70%
±5% (V/V) ethyl alcohol

Ingredients: ALCOHOL, WATER, ARTEMISIA ANNUA EXTRACT, TOCOPHERYL ACETATE, PANTHENOL, GLYCERIN, ACRYLATES/C10-30 ALKYL ACRYLATE CROSSPOLYMER, PROPYLENE GLYCOL, 1,2-HEXANEDIOL, AMINOMETHYL PROPANOL, PARFUM



ARTEMISIA UNDERWEAR LAUNDRY SOAP

Contains Plant Extracts-
Cleans & Brightens



ARTEMISIA *Underware* LAUNDRY SOAP



Contains artemisia annua extracts and dirt-removing complex, deeply cleanses clothing of grime and stains. Soft-textured, gentle on hands, leaving underwear clean, soft and comfortable to wear.

Caution:

Put it in cool dry area, keep out of reach of children. For external use only. Do not swallow. For optimal results, use daily. Discontinue use immediately in case of irritations or sensitivities.

Storage:

Store in a cool, dry place. Avoid direct sunlight.

Ingredients: SODIUM PALMATE, SODIUM COCOATE, WATER, ARTEMISIA ANNUA EXTRACT, SODIUM CHLORIDE, PALMITIC ACID, GLYCERIN, PROPYLENE GLYCOL, BHT, 1,2-HEXANEDIOL, TETRASODIUM EDTA, TETRASODIUM ETIDRONATE, TITANIUM DIOXIDE, PARFUM, CHLOROXYLENOL, CI 17200, CI 19140



ARTEMISIA

ANTIBACTERIAL NOURISHING SOAP

Eliminates Odor & Germs
Moisturizes & Nourishes



ARTEMISIA
Antibacterial
NOURISHING SOAP
*Eliminates Odor & Germs
Moisturizes & Nourishes*



Formulated with select artemisia annua extracts, soft-textured, gentle on skin, hypoallergenic, fresh-scented, deeply nourishes and moisturizes, eliminates body odor, combats germs and bacteria, refreshes body and mind, leaving skin looking healthy and radiant.

Caution:

Put it in cool dry area, keep out of reach of children. For external use only. Do not swallow. For optimal results, use daily. Discontinue use immediately in case of irritations or sensitivities.

Storage:

Store in a cool, dry place. Avoid direct sunlight.

Ingredients: GLYCERIN, SUCROSE, WATER, ALCOHOL, PALMITIC ACID, LAURIC ACID, SORBITOL, SODIUM LAURETH SULFATE, STEARIC ACID, SODIUM HYDROXIDE, ARTEMISIA ANNUA EXTRACT, PROPYLENE GLYCOL, 1, 2-HEXANEDIOL, PARFUM, CI 60730



ARTEMISIN

MOISTURIZING PROTECTION
HAND SOAP



ARTEMISIA

Moisturizing Protection
HAND SOAP



Contains artemisia annua extract and moisturizing complex, produces rich creamy lathers with pleasant scent, cleanses thoroughly, and leaves skin feeling moisturized, protected and nourished. Soft-textured, gentle on hands, suitable for whole family.

Directions:

Apply on wet hands, rub on each other and rinse off. Suitable for hand cleansing and care at home and in public places.

Caution:

For external use only. Do not swallow. If getting into eyes, flush with plenty of water or seek medical attention immediately. Keep out of reach of children.

Storage:

Store in a cool, dry place. Avoid direct sunlight.

Ingredients: WATER, SODIUM LAURETH SULFATE, GLYCERIN, COCAMIDOPROPYL BETAINE, COCAMIDE DEA, SODIUM CHLORIDE, ARTEMISIA ANNUA EXTRACT, ALCOHOL, PROPYLENE GLYCOL, 1,2-HEXANEDIOL, MAGNESIUM CHLORIDE, MAGNESIUM NITRATE, DISODIUM EDTA, CITRIC ACID, PARFUM, CHLOROXYLENOL, METHYLCHLOROISOTHIAZOLINONE, METHYLISOTHIAZOLINONE



ARTEMISIA

Women Roll-On
DEODORANT
Alluring Aura



ARTEMISIA *Women Roll-On* **DEODORANT**

The soft-textured formula containing artemisia annua extract has great skin affinity, gently refreshes with long-lasting fresh scent.

Directions:

Glide gently on body areas that sweat easily.

Caution:

For external use only. Do not ingest. Please stop use if irritations occur.

Storage:

Sore in a cool, dry place. Avoid direct sunlight.

Ingredients: WATER, ALUMINUM CHLOROHYDRATE, GLYCERIN, STEARETH-21, CYCLOPENTASILOXANE, CETEARYL ALCOHOL, CYCLOHEXASILOXANE, STEARETH-2, HAMAMELIS VIRGINIANA (WITCH HAZEL) WATER, ARTEMISIA ANNUA EXTRACT, ALOE BARBADENSIS LEAF JUICE, ALLANTOIN, MENTHOL, GLYCERYL STEARATE, DIMETHICONE, PROPYLENE GLYCOL, ALCOHOL, 1,2-HEXANEDIOL, MALTODEXTRIN, PARFUM, DIAZOLIDINYL UREA, METHYLPARABEN, PROPYLPARABEN



ARTEMISIN

Men Roll-On
DEODORANT
Dynamic Zest



ARTEMISIA *Men Roll-On* **DEODORANT**

The soft-textured formula containing artemisia annua extract has great skin affinity, gently refreshes with long-lasting fresh scent.

Directions:

Glide gently on body areas that sweat easily.

Caution:

For external use only. Do not ingest. Please stop use if irritations occur.

Storage:

Sore in a cool, dry place. Avoid direct sunlight.

Ingredients: WATER, ALUMINUM CHLOROHYDRATE, GLYCERIN, STEARETH-21, CYCLOPENTASILOXANE, CETEARYL ALCOHOL, CYCLOHEXASILOXANE, STEARETH-2, HAMAMELIS VIRGINIANA (WITCH HAZEL) WATER, ARTEMISIA ANNUA EXTRACT, ALOE BARBADENSIS LEAF JUICE, ALLANTOIN, MENTHOL, GLYCERYL STEARATE, DIMETHICONE, PROPYLENE GLYCOL, ALCOHOL, 1,2-HEXANEDIOL, MALTODEXTRIN, PARFUM, DIAZOLIDINYL UREA, METHYLPARABEN, PROPYLPARABEN

ARTEMISIA

CONCENTRATED ANTIBACTERIAL LAUNDRY DETERGENT



Remove Dirt & Stains
Ultra Cleanliness & Fresh Scent



ARTEMISIA

CONCENTRATED ANTIBACTERIAL LAUNDRY DETERGENT

*Remove Dirt & Stains
Ultra Cleanliness & Fresh Scent*



Natural herbal formula with artemisia annua extract, gentle on hands, leaving clothes looking bright, feeling soft and smelling fresh. Breaks down stubborn stains, deeply cleans, time/labor-saving, machine/hand wash safe. Pretreatment of stubborn stains and grime by applying sparingly and rubbing gently on stained area before normal wash routine may help achieve optimal results.

Directions:

Use 30g detergent for 3kg garments (approx.10pcs) in case of machine wash;

Use 10g detergent for 1kg garments (approx.3pcs) in case of hand wash;

Caution:

Use proper amount according to the level of dirt and grime hung to the laundry. Keep out of reach of children. If getting into eyes, flush with plenty of water. For use on silk/wool clothing liable to color run, try it on inconspicuous area first before use.

Storage:

Store in a cool, dry place. Avoid direct sunlight.

Ingredients: WATER, SURFACTANT, COCONUT ACID, PROPYLENE GLYCOL, PROTEASE, ARTEMISIA ANNUA EXTRACT, TRICLOSAN, AROMA, PRESERVATIVE





Better Life, Better Future

LONGRICH INTERNATIONAL DEPARTMENT
PRODUCT CATALOG



ADDRESS:

Longliqi Biological Industrial Park, Changshu, Jiangsu, China